

# Albion Alloys Precision Metals for Model Makers

## Guide to slide fitting tube and rod

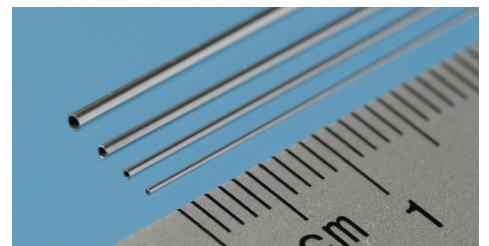
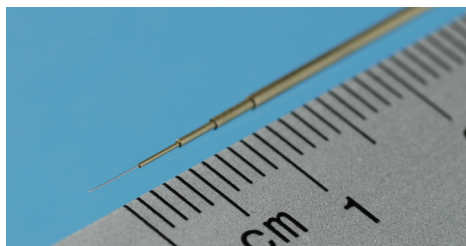
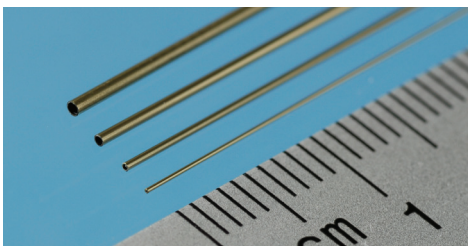
### ROD FITTING INTO TUBE

OUTER DIA. ROD	PROD. CODE	FITS INTO OUTER DIA. TUBE	PRODUCT CODE
0.1 MM	NSR0M	0.3 MM	MBT03 / NST03
0.2 MM	NSR1M	0.4 MM	MAT04 / MBT04 / NST04
0.2 MM	BW02	0.4 MM	MAT04 / MBT04 / NST04
0.3 MM	BW03	0.5 MM	MAT05 / MBT05 / NST05/BT1M
0.33 MM	NSR2M	0.8 MM	MAT06 / MBT06 / NST06
0.4 MM	BW04	0.6 MM	MAT06 / MBT06 / NST06
0.45 MM	NSR3M	0.9 MM	MAT07 / MBT07 / NST07
0.5 MM	BR2M	0.7 MM	MAT07 / MBT07 / NST07
0.5 MM	BR2M	1.0 MM	BT1M
0.8 MM	BR3M	1.0 MM	MAT10 / MBT10

### TUBE FITTING INTO TUBE

OUTER DIA. TUBE	PROD. CODE	FITS INTO OUTER DIA. TUBE	PRODUCT CODE
0.3 MM	MBT03 / NST03	0.5 MM	MAT05 / MBT05 / NST05
0.4 MM	MAT04 / MBT04 / NST04	0.6 MM	MAT06 / MBT06 / NST06
0.5 MM	MAT05 / MBT05 / NST05	0.7 MM	MAT07 / MBT07 / NST07
0.5 MM	MAT05 / MBT05 / NST05	1.0 MM	BT1M / AT1M / CT2M
0.6 MM	MAT06 / MBT06 / NST06	0.8 MM	MAT08 / MBT08
0.7 MM	MAT07 / MBT07 / NST07	0.9 MM	MAT09 / MBT09
0.8 MM	MAT08 / MBT08	1.0 MM	MAT10 / MBT10
1.0 MM	MAT10 / MBT10 / NST03 / BT1M	2.0 MM	AT2M / BT2M / CT3M
2.0 MM	AT2M / BT2M / CT2M	3.0 MM	AT3M / BT3M / CT3M
3.0 MM	AT3M / BT3M / CT3M	4.0 MM	AT4M / BT4M / CT4M
4.0 MM	AT4M / BT4M / CT4M	5.0 MM	AT5M / BT5M / CT5M

THEN BRASS ONLY FROM 5 MM TO 10 MM I.E. 5 MM INTO 6 MM / 6 MM INTO 7 MM ETC.



[www.albionalloys.co.uk](http://www.albionalloys.co.uk)

For youtube videos and downloadable pdf's

ALBION

ALLOYS